



Product Reference Guide

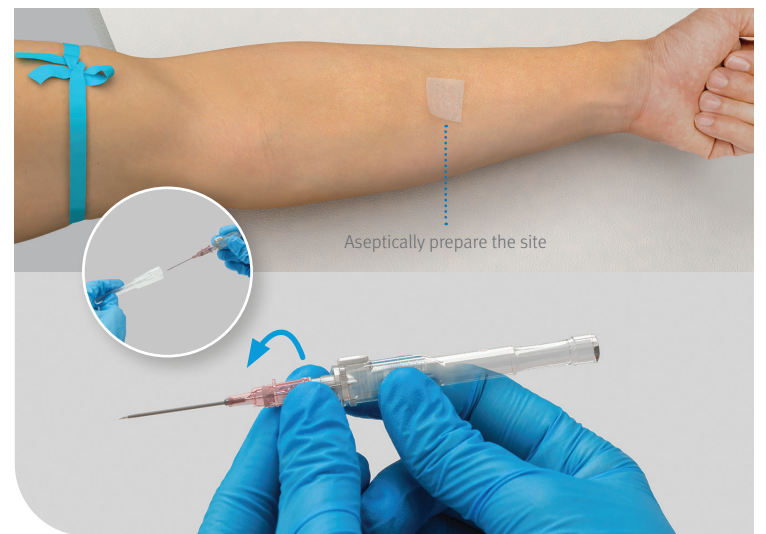
SuperCath® 5

Safety IV Catheter

Preparation for Insertion

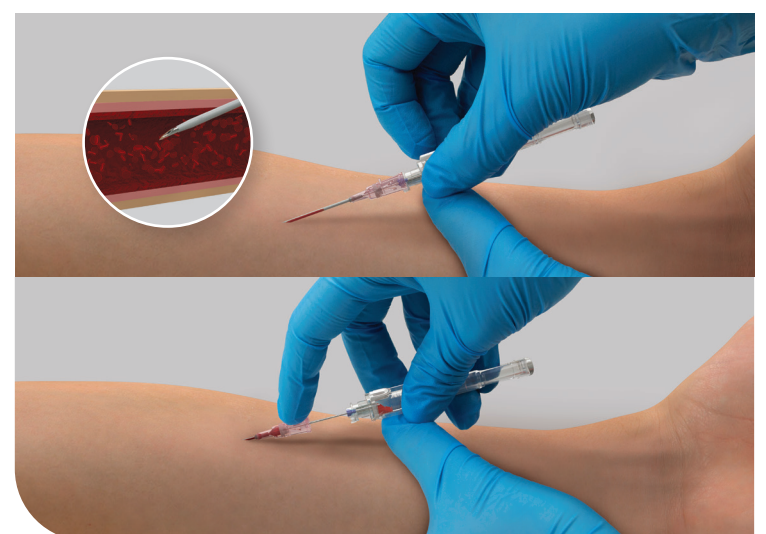
Use Aseptic Technique

1. Open the package.
2. Remove the needle cover and inspect the introducer needle tip.
3. Separate the catheter from the introducer needle by twisting and reseating the catheter hub back into position with the advancing tab facing upward. This will help ensure proper catheter advancement and needle retraction during venipuncture.
 - › Do not touch the catheter or the metallic introducer needle.



Insert and Advance Catheter

4. Hold the SuperCath 5 using the finger grips on both sides of the device. Stabilize the site and perform the venipuncture.
 - › The side-notched introducer needle and flashback chamber will provide visual confirmation that the needle has penetrated the vessel. (Side-notch not available with 16G and 14G catheters).
5. Fully advance and thread the catheter into the vessel until it reaches the required depth.



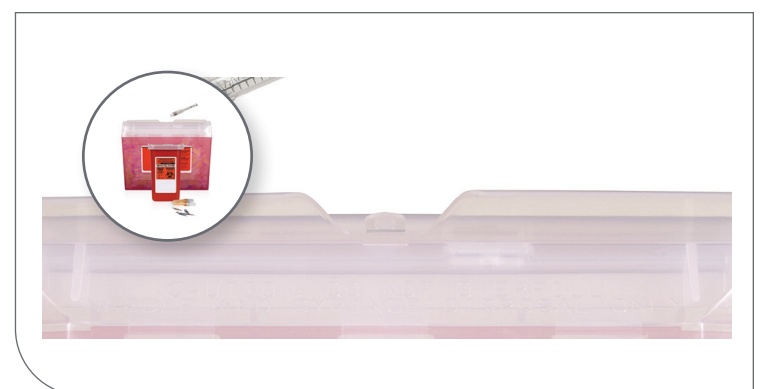
Remove Needle

6. Release the tourniquet and apply digital pressure to interrupt blood flow.
7. Stabilize the catheter hub and depress the white activation button to retract the introducer needle into the safety cover.
 - › The single-use integral check valve in conjunction with applied digital pressure will help reduce blood leakage from the catheter upon needle retraction.
 - › The integral check valve is not intended to stop bleeding completely.



Prepare for Use

8. Appropriately dispose of the SuperCath 5 into a sharps container per your facility's policy and procedures.
9. Aseptically secure the infusion set to the catheter hub. Dress the catheter per facility policy and procedures.



WARNING: Do not resterilize, reuse or re-process. FOR SINGLE USE ONLY. Resterilization, reuse, or reprocessing can cause contamination of the device, which may lead to infection of the patient or cross infection.

Not made with natural rubber latex. Winged catheters contain DEHP in the wings only, not in the fluid pathway.

Indications

The SuperCath 5 is intended to access a vein or artery and to administer fluids. It is designed for short-term use (less than 30 days), and is designed to minimize inadvertent and accidental needlesticks.

Precautions

- › Use caution when handling the SuperCath 5 and maintain proper aseptic technique during insertion, withdrawal, and disposal as well as when the catheter is in patient use.
- › Do not move the introducer needle forwards or backward in the catheter before use or during puncture.
- › Do not reinsert a partially or completely withdrawn needle.
- › Please refer to your facility protocols for appropriate use intervals.
- › If you fail to secure blood vessel access, use a new catheter to puncture the vessel again.
- › Take care not to press the activation button accidentally before use or during puncture.
- › Do not use if the package is wet, opened, dirty, or damaged.
- › Use immediately after package is opened. Discard properly after use.
- › Perform all manipulations aseptically.
- › Do not use sharps such as scissors near the catheter.
- › The SuperCath 5 should only be used by healthcare professionals familiar with catheterization techniques. Do not use for purposes other than those intended.
- › Store the SuperCath 5 in a dry (humidity below 75%), dark (avoid direct sunlight), room-temperature (60-80° F) cabinet or closet.
- › Wear proper gloves during the procedure.
- › The material of the introducer needle is not Magnetic Resonance Imaging (MRI) compatible. Do not insert introducer needle in MRI.
- › Do not bend the needle while using the product.
- › Carefully evaluate and select the appropriate size catheter.
- › 18 to 22 gauge catheters are suitable for use with power injectors set to a maximum pressure of 300 psi.

SuperCath is a registered trademark of MediKit Co., Ltd

Rx only. For complete listing of warnings, precautions and instructions for use, refer to the product IFU.

© 2023 ICU Medical Inc. | US-ED04-0058-0423R2 | For Distribution

icumedical
human connections

800.824.7890 | www.icumed.com